

# NEWAGE

Lighting & Refrigeration



Shop 1,  
Ramscorp Building,  
Nadi Back Road.



+ (679) 772 2175



saneel@newagelighting.com.fj

# About us

New Age Lighting & Refrigeration is an electrical company in Nadi, established in 2016 and has been providing electrical and mechanical services for commercial, industrial & construction fit outs for a wide range of clients and builders.

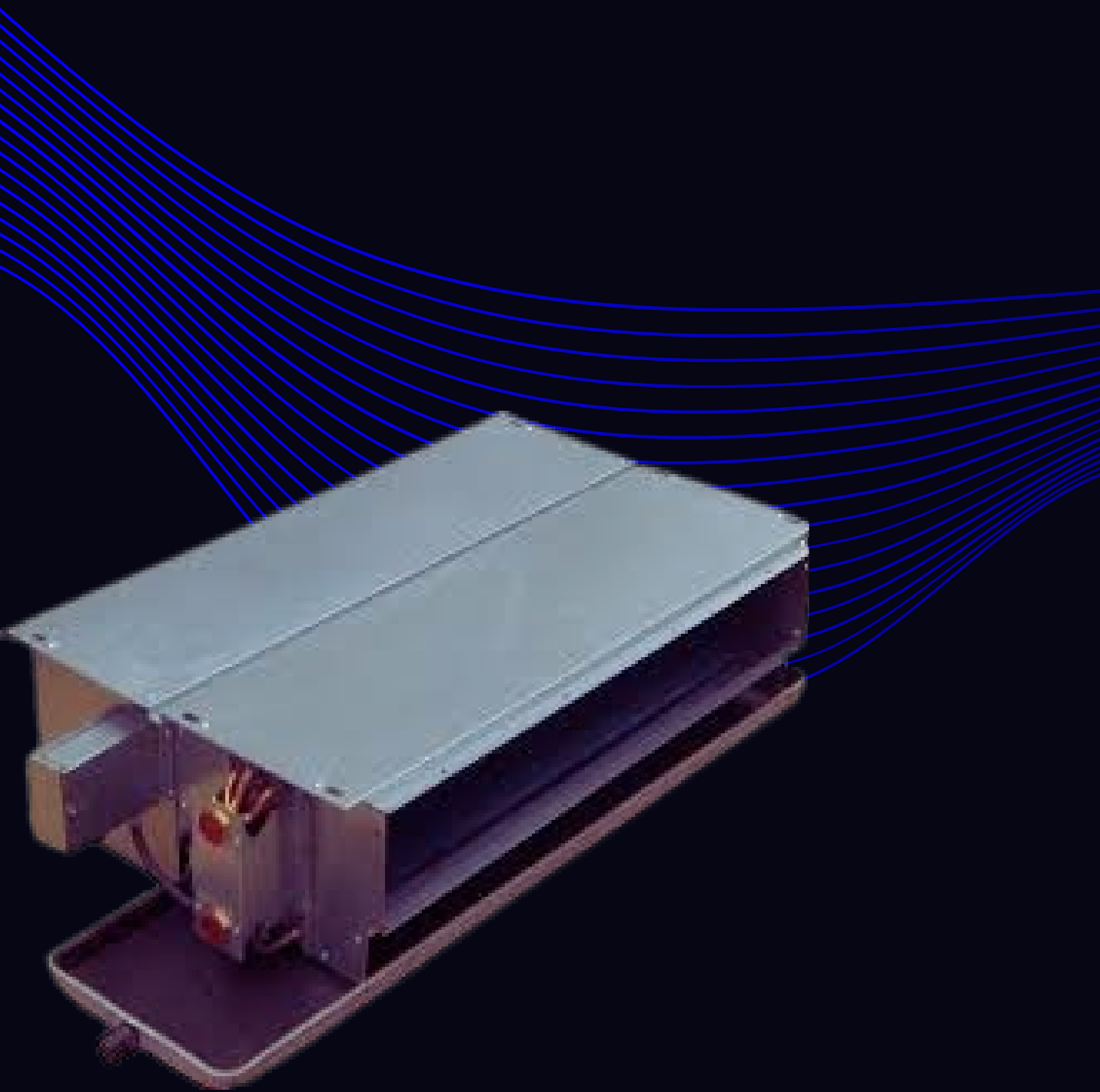
Our dedicated staff are frequently attending & updating courses to make sure our customers receive the most current solution & ideas to meet our clients' requirements.

New Age management and staff are experience in all facets of electrical service and maintenance & we can offer tailor make maintenance proposals to suit client needs and compliance requirements.

We are dedicated to deliver the highest quality of workmanship & within choosing New Age Lighting and Refrigeration you will have an experienced team of contractors & staff working to meet all your requirements with great customer service before, during & after the job has been completed. We pride ourselves in delivering reliable, efficient, high quality and professional workmanship. At New Age, you will not be disappointed with what we deliver

Our Team; Headed by Mr Saneel Salesh Chand (Managing Director) together with our Project Manager and Administration/Accounts Manager, our team consists of 12 well qualified and experienced electrical & Mechanical Technician who ensure:

- Professional Friendly Service
- Timely Response
- Safety and Compliance



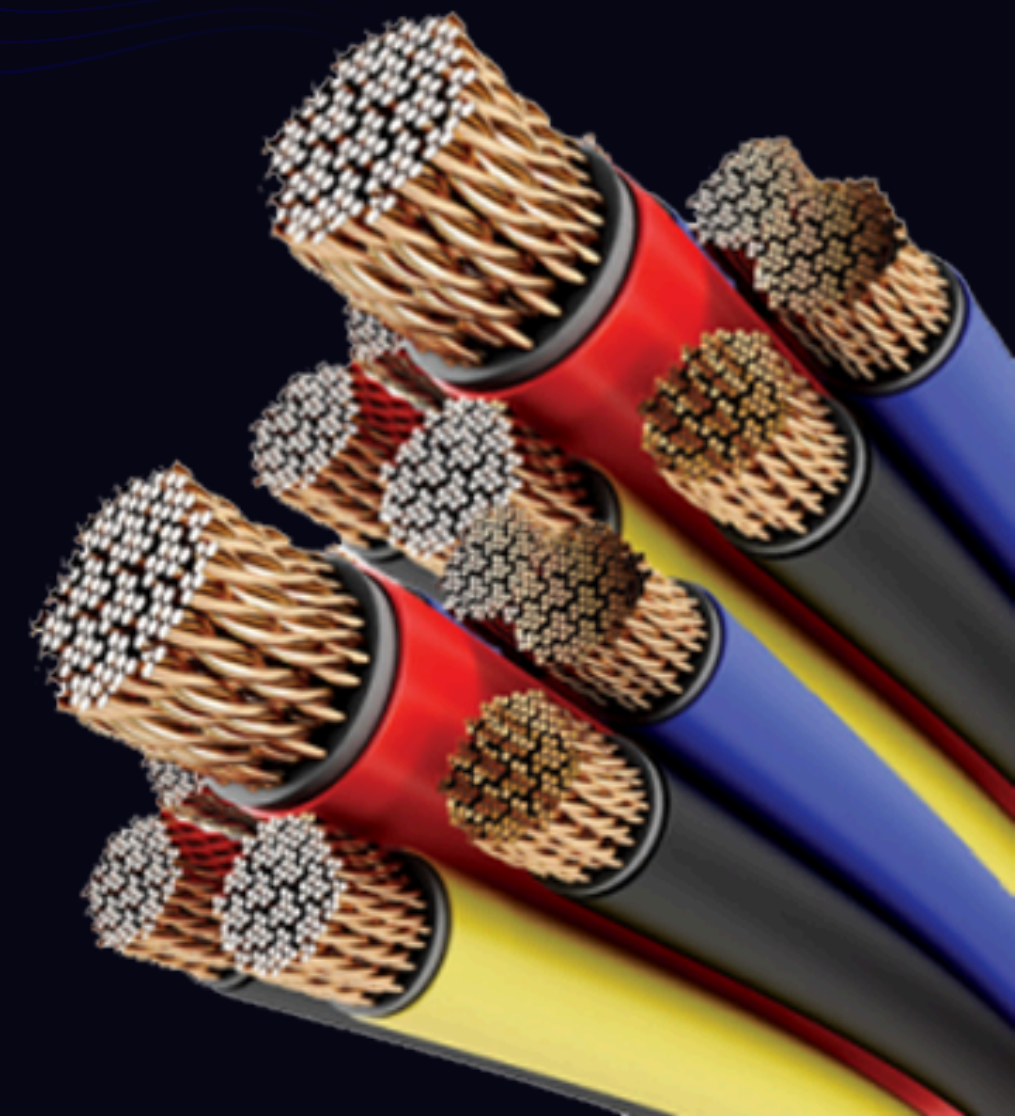
# Services

## ELECTRICAL INSTALLATION

We are proud to have accreditation with established and distinguished associations within the electrical contracting and construction industries, and are committed to providing high quality workmanship. Our technicians regularly complete strict assessments and qualifications to ensure we achieve the highest possible standards of quality, safety and customer care.

With years of experience, New Age Lighting & Refrigeration Ltd has an excellent track record within the Electrical Contracting Industry, offering high quality projects with outstanding service to its clients. From small office installations and fit-outs to prestigious executive villas and resorts, New Age Lighting & Refrigeration Ltd have been supporting commercial and industrial sectors on both a local and national scale. Our partnership with construction companies, resort maintenance services and heavy industry has given us a very strong foundation, however it is our attention to detail that retains our impressive portfolio. New Age Lighting & Refrigeration Ltd provides a comprehensive range of electrical contracting services for industrial, commercial and domestic clients.

A widely skilled and experienced team, extensive certification and years of experience enable us to capably deliver design, installation and maintenance of everything from vast heavy industrial systems, to an extra lighting or power point. Supplying full drawings, O&M manuals where called for and EFL certification on all installations.



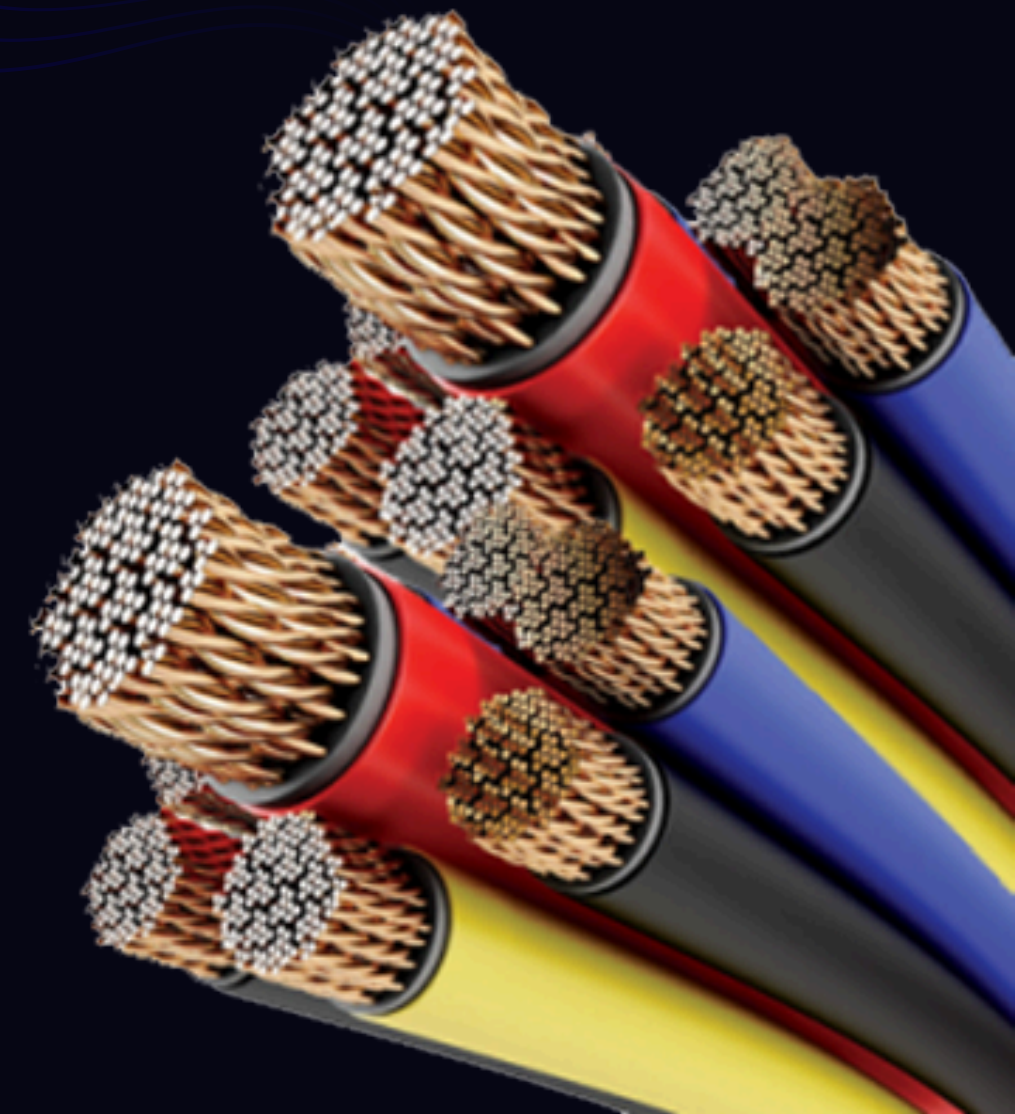
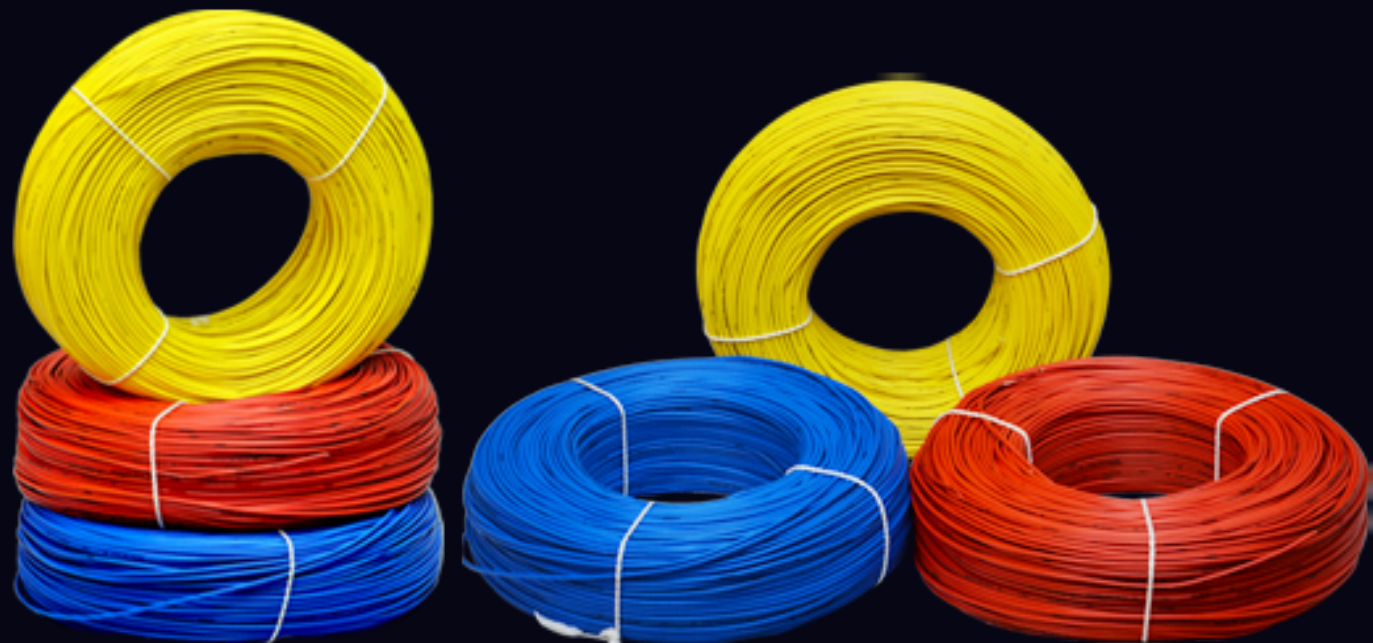
# Services

## ELECTRICAL INSTALLATION

We are able to undertake all types of installations from large industrial factories, to retail outlets and modern equipped office and data centre critical power suites. Whether you require the installation of heavy duty industrial machinery or energy efficient office lighting, we have operatives with the experience and expertise to meet all of your electrical requirements.

New Age Lighting & Refrigeration Ltd also specialise in the installation of low energy lighting whether it is a new fit out or retro fit. We are able to carry out site surveys for clients demonstrating pay back periods for return on investment on any size project.

We have carried out installations in shopping centres, retail shops, car parks, hotels, public houses, local government buildings and all types/sizes of industrial factory units.



# Services

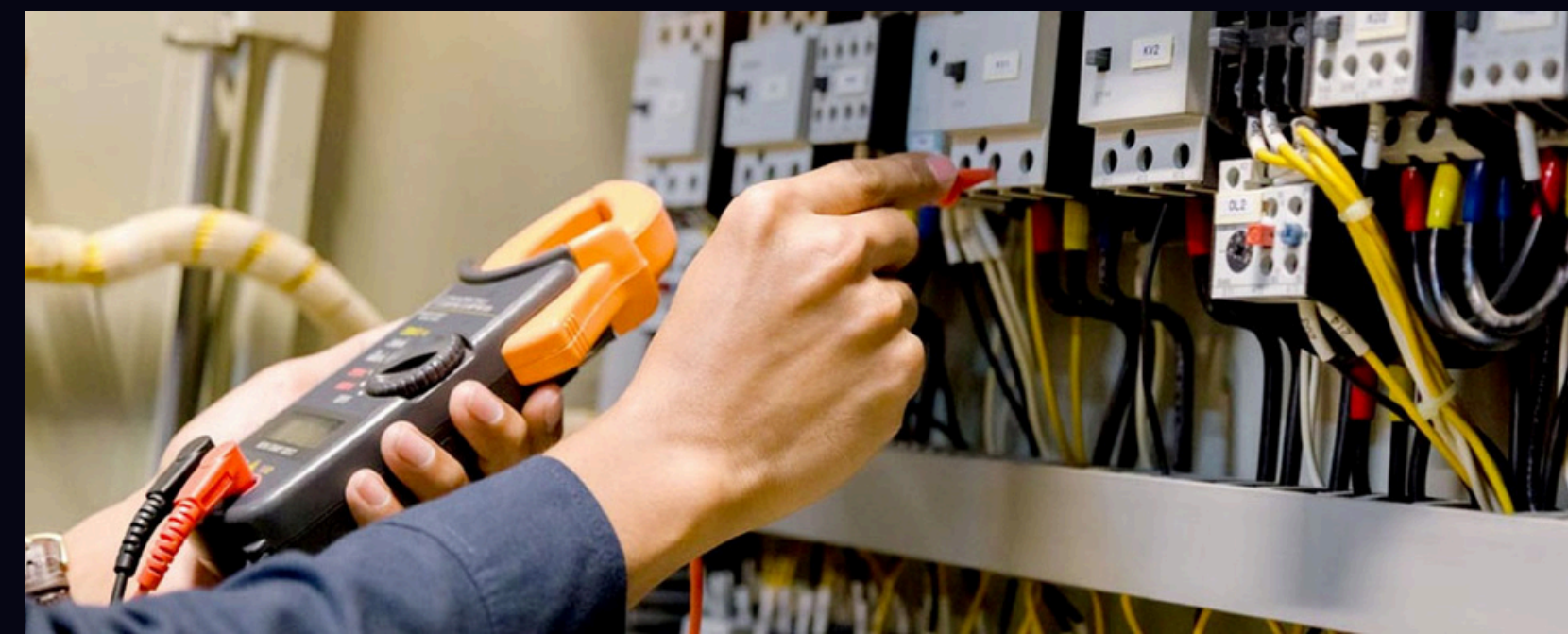
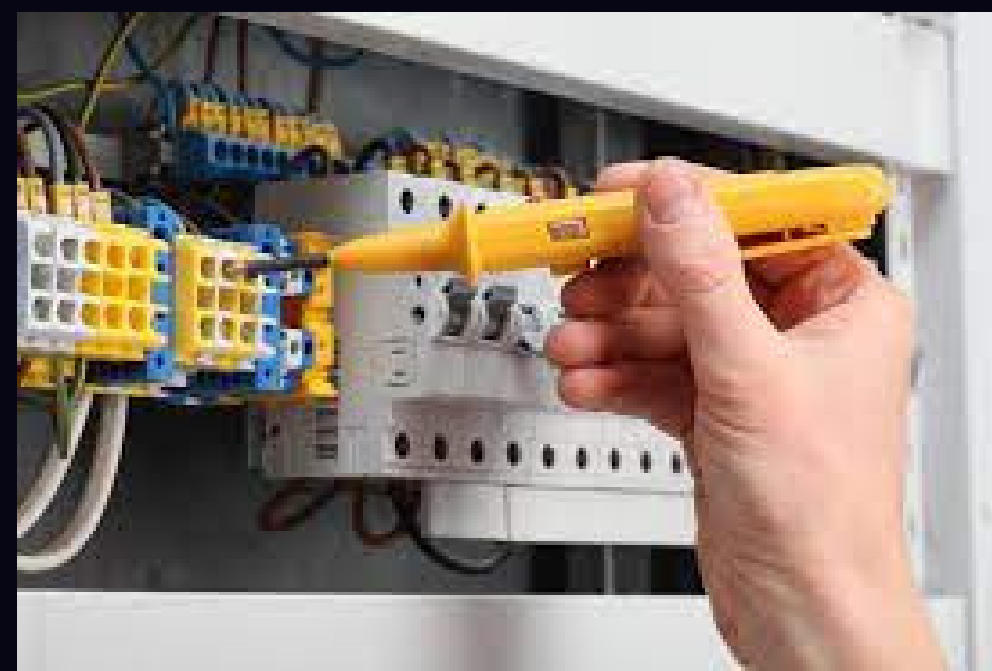
## ELECTRICAL TESTING and INSPECTION

Electrical inspection and testing identifies deficiencies in an electrical installation before they become serious hazards. Over time, all electrical installations deteriorate due to age, loading, wear and tear, mechanical damage, overheating, environment, poor maintenance, etc.

Legislation requires that electrical installations are maintained in a safe condition and therefore must be periodically inspected and tested.

New Age Electrical & Refrigeration Limited has its own in house dedicated testing & inspection department who carry out electrical testing and inspection on new and existing condition reports to suit the installation across Fiji.

- To comply with the requirements of Energy Fiji Ltd (EFL), all electrical systems, from the main intake through to the final fixed appliances and accessories, must be inspected and tested on a regular basis
- The frequency of this testing is dependent on the type of premises and varies between three months and five years
- Many companies struggle to complete the testing using in-house personnel due to lack of time, resources and knowledge of this specialised field
- Since July 2015, the regulations require a skilled electrical competent person with the necessary qualifications, skills and experience
- There are also requirements for the protection against fire within electrical installations
- Electrical installations must incorporate RCDs on specific circuits for the protection against electric shocks



# Services

## PAT TESTING

Fixed Installation Testing is the inspection and testing of the permanent electrical systems (circuits) within premises. It is an electrical survey carried out to ascertain if there are any faults present within the fixed electrical installation and also to check that the electrical installation complies with current electrical legislation.

New Age Lighting & Refrigeration Ltd carry out fixed installation testing to AS/ NZS 3017:2007 and AS/ NZS 3019:2007 Wiring Regulations standards. Our electrical technicians hold Wiremans License and internationally recognized electrical qualifications and are fully experienced in the inspection and testing of our own installations and customers commercial, industrial and residential premises.

First and foremost we will liaise with you as to the purpose for the fixed installation testing and ascertain the extent of inspection and testing to be carried out. It is our aim to minimise disruption to your premises whilst at the same time provide a thorough and professional electrical testing service.

New Age Lighting & Refrigeration Ltd is able to carry out all disciplines of testing and work closely alongside the client to minimise disruption to the business during the course of the works.

On completion of any periodic testing we will meet with the client to discuss what remedial action needs to be taken to bring the installation up to current standards.

As well as fixed wire testing we can carry out your portable appliance testing for your company protecting your workforce and you as an employer



# Services

## DYNALITE SERVICES

Dynalite systems creates sophisticated, impressive, reliable, and energy efficient lighting and building control solutions for residential, offices, hospitality, retail, industry, public spaces and more.

This is more than just on/off lighting control. Dynalite controls allow you to create ambience and recall different lighting scenes to suit your mood and the occasion. You can configure it from any point on the network and generate system status reports.

- Supply of Dynalite hardware to projects and customers;
- On site programming of Dynalite systems;
- Remote programming of Dynalite systems;
- Testing and commissioning of Dynalite installations;
- Troubleshooting Dynalite system faults;
- Dynalite hardware and software upgrades;
- Ongoing maintenance of Dynalite systems;
- Philips Dynalite System Design and System Builder training;
- 24/7 call out support services for Dynalite systems.



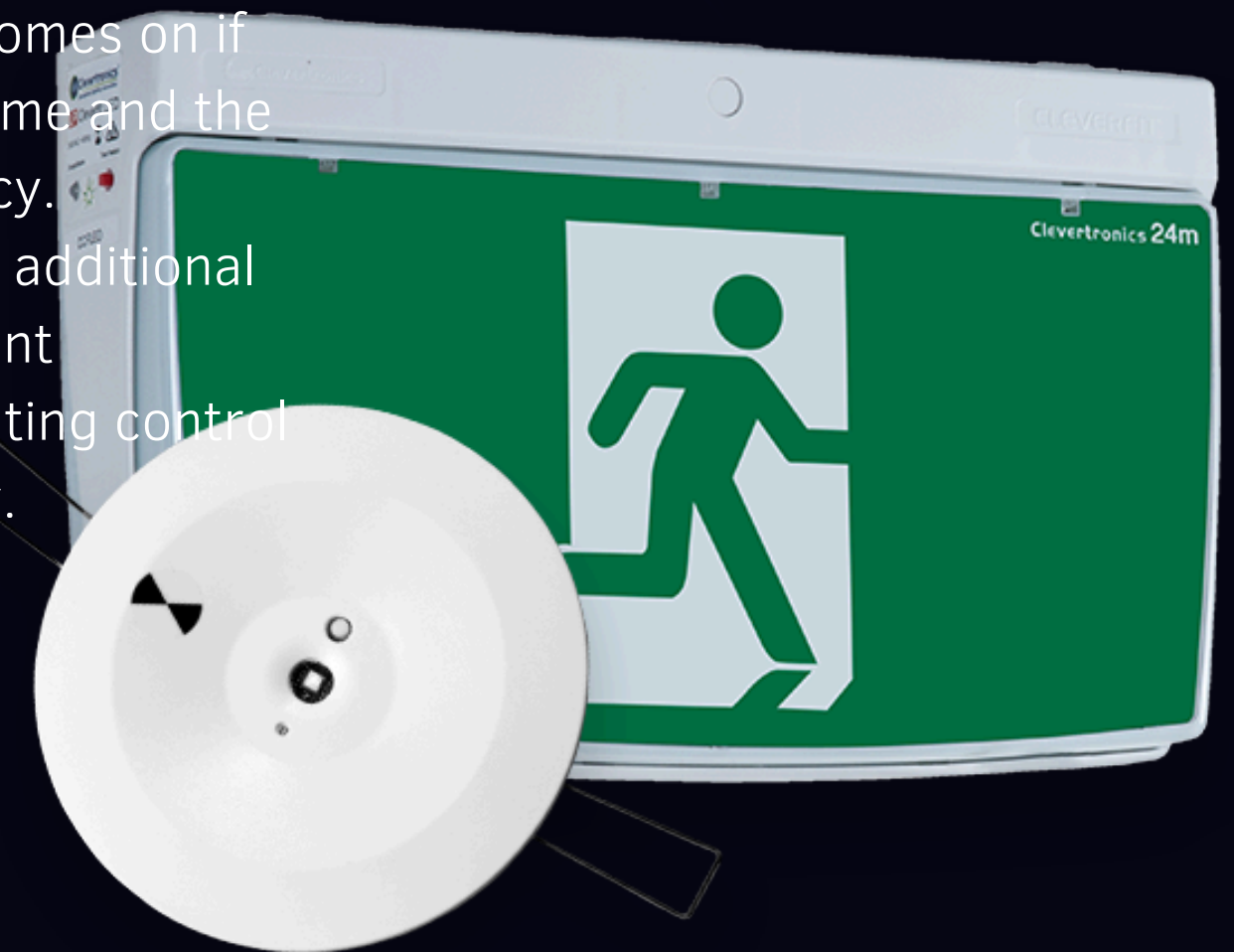
# Services

## EMERGENCY LIGHTING

We offer free technical surveys to assess what type of lighting is currently installed in your premises. If needed and within a short period of installation time, your existing lighting can be swapped for alternatives that provide greater light output and halve your energy consumption.

New Age Lighting & Refrigeration Ltd design and install emergency lighting to AS/ NZS 2293.1:2018. We also offer contracts for the testing and advice to help you conform to the responsibilities for the emergency lights.

Emergency lighting is essential for the safety of building occupants. It is vital that the lighting comes on if the normal lighting fails. It needs to be sufficiently bright, illuminated for a sufficient length of time, and the light sources so positioned, that the building occupants can be evacuated safely in an emergency. Lighting controls can also be added to switch your lighting on and off as and when required, for additional savings. Our preferred product range includes high output LED luminaires, low energy fluorescent luminaires, occupancy detectors, daylight sensors, dimming control systems and intelligent lighting control systems. All our preferred products are hand picked, designed and come with a 5 year warranty.





# Services

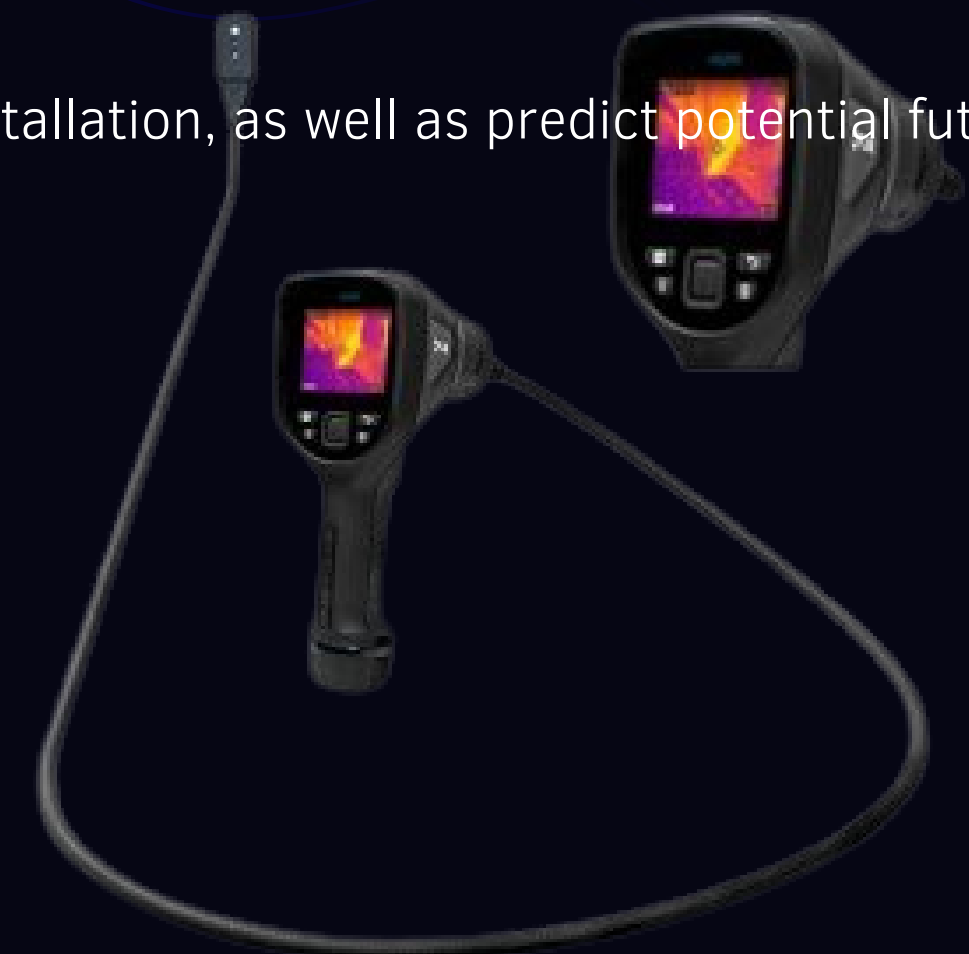
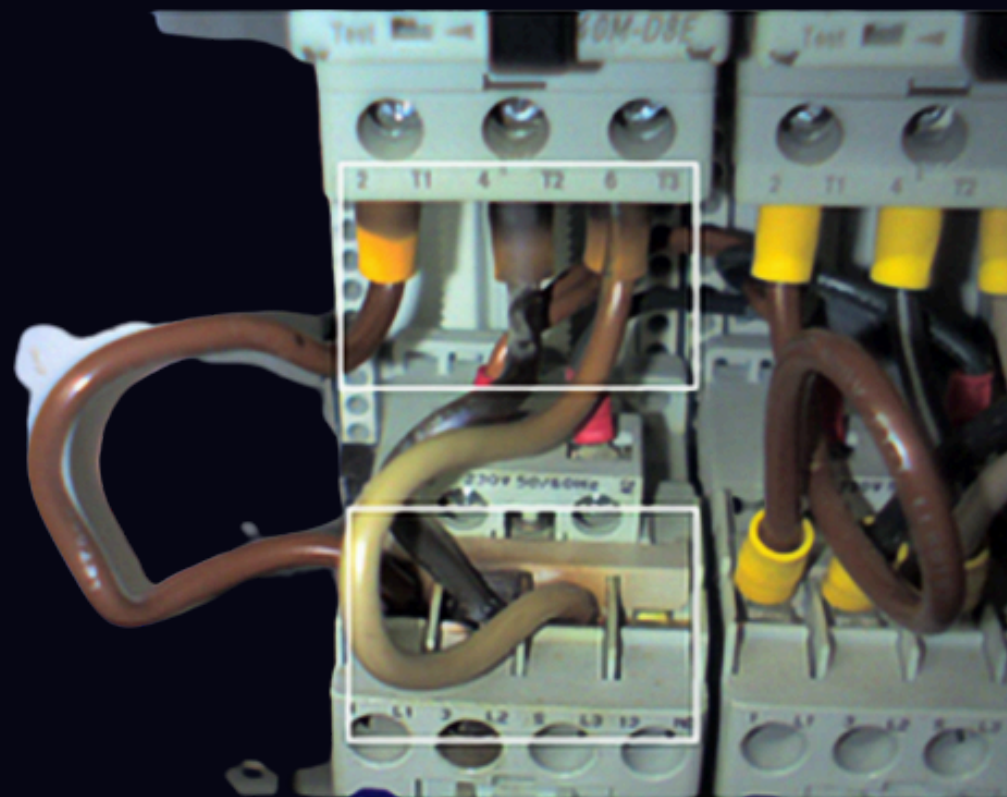
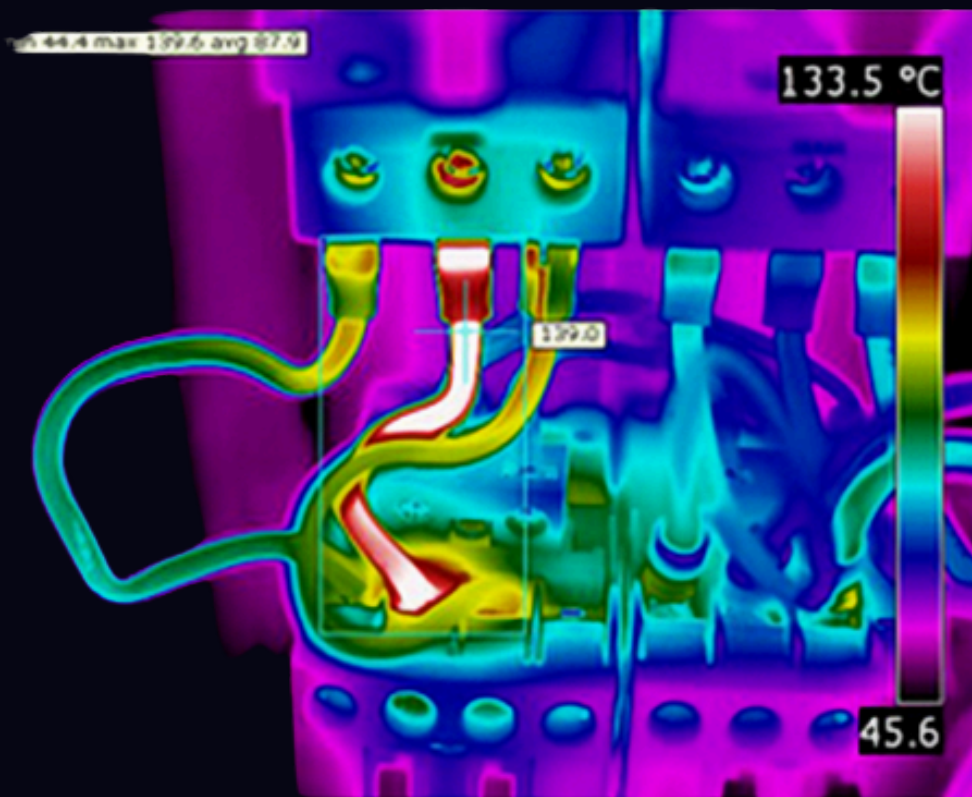
## THERMAL IMAGING SURVEYS

Electrical thermal imaging is the most established application for thermography. Electrical thermography is useful as there is no other preventive maintenance technology or method that can identify electrical issues such as poor connections, over loaded cables, circuits and faulty electrical equipment as safely and as effectively.

Thermal cameras are an extremely effective tool for testing electrical systems for component damage, excessive heat and for ensuring overall system efficiency. They can be used absolutely everywhere from domestic installations to testing inside complex distribution systems, making them an incredibly versatile testing tool.

Everything from common electrical distribution boards to complex electrical systems running industrial-grade machinery rely on their components and the safe introduction of electricity into the system in order to run efficiently. Component breakdown or inefficiently running electrical systems can be both a costly process due to the amount of excess power used and can also result in an electrical system becoming increasingly unsafe to be utilised.

Using thermal imaging, our technicians can accurately identify existing faults with an electrical installation, as well as predict potential future issues that could save lives.

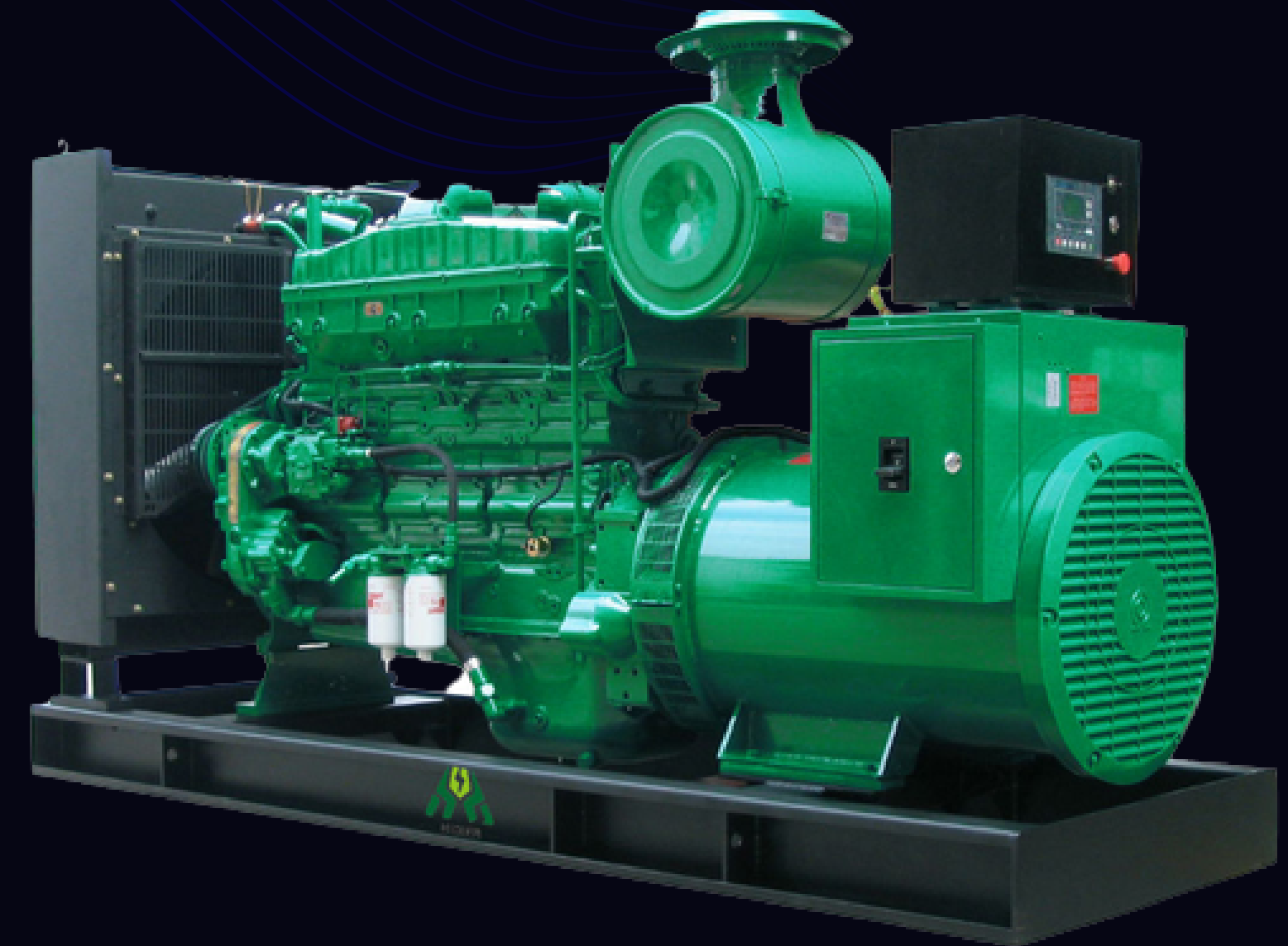


# Services

## STANDBY POWER SYSTEMS

Over our years of trading New Age Lighting & Refrigeration Ltd has installed many generators and backup power systems of varying sizes from residential standby, Industrial standby or temporary construction site supply to private single dwelling automatic mains failure (AMF) backup facilities.

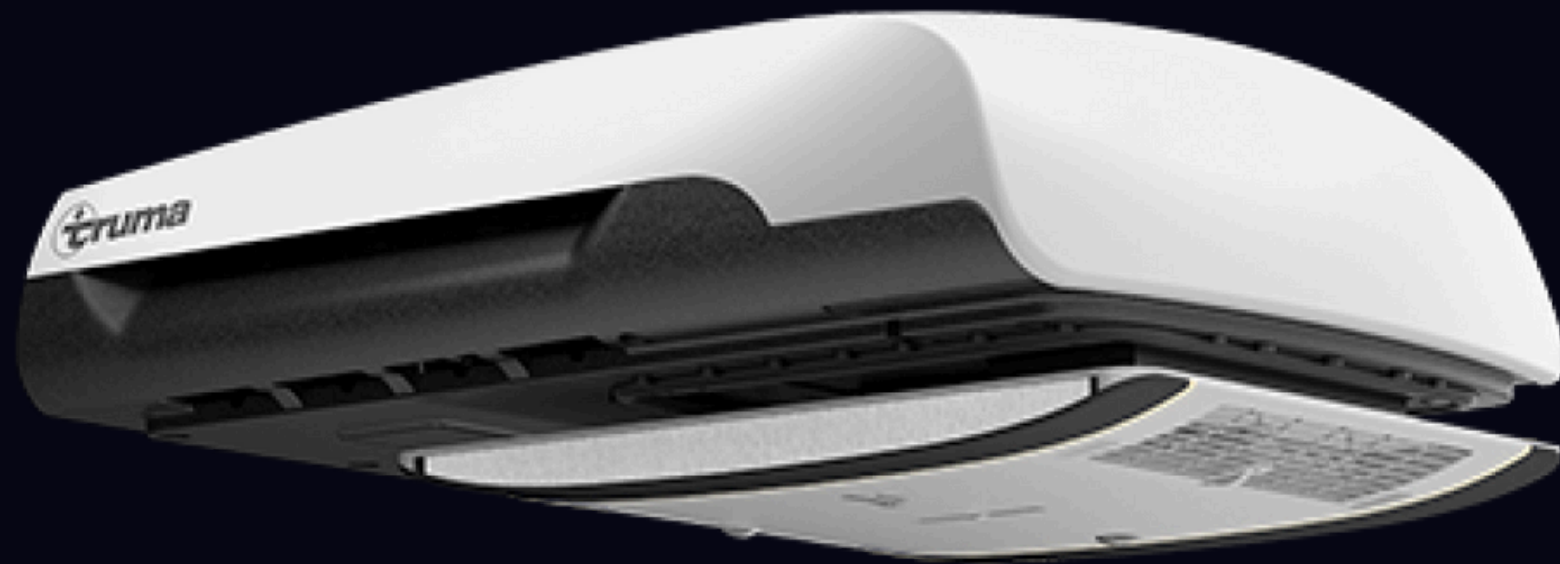
We are able and always install the associated electrical switchgear and controls for the Generator systems.



# Services

## COMFORT COOLING and AIR-CONDITIONING

New Age Lighting & Refrigeration Ltd offers a variety of different solution for Air conditioning and comfort cooling systems.



# Projects



## Air Laucala Lounge & Hanger

- Supply and Installation of complete Electrical System with standby generators.
- Supply and installation of Dali system on First Floor Guest area
- Installation of PLC controlled main Hanger Door system
- ATS system and changeover with Solar provision
- Termination of all cables from LV to MV side.
- Supply and installation of Switches, Isolators, GPOs as per Client/Consultant requirements
- Estimated Value of Works 1.5M FJD.

# Projects



## Wailoaloa Hotels Central Facilities

- Design, Supply and Installation of complete Electrical System
- Supply and installation of Dynalite System and programming testing & Commissioning.
- On site Dali system training to client
- Testing and commissioning, As-builts and Handover to clients
- Installation of complete Light fitting with Dali provision and CAT 5 Cabling across so all the Dali Panel communicate with each other
- Estimated Value of Works 1.2M FJD.

# Projects

## Radisson Blu Restaurant

- Supply and Installation of entire Electrical Services, and Switchboards
- Kitchen Equipment wiring, testing and commissioning.
- Design, Supply and installation of lights using Dialux Software.
- Submission of as-builts and client training
- Estimated Value of Works 160k FJD.



# Projects



## Como Laucala Island Resort

- Supply and Installation of all the Distribution boards, and Switchboards
- Design, Supply and installation of lights using Dialux Software & Program Dynalite System, test and commission
- Estimated Value of Works 1.2M FJD.

# Resort projects



## Sofitel Resort & Spa

In 2020 Sofitel Resorts & Spa went under a full refurbishment of the public areas, New Age Lighting was engaged as one of the major suppliers of featured lighting products for the public areas mainly the Lobby and Republik Bar,

Later in the year, New Age Lighting were awarded the supply and installation of the full refurbishment project for Blocks 3 to 6. This was during the midst of the Covid- 19 pandemic however our commercial team handled the situation well with timely supply of materials and feature lightngs, most importantly our team onsite cooperated with the main builder and worked hand in hand for successful and timely completion of the project.



# Resort projects



## Sofitel Resort & Spa

In 2020 Sofitel Resorts & Spa went under a full refurbishment of the public areas, New Age Lighting was engaged as one of the major suppliers of featured lighting products for the public areas mainly the Lobby and Republik Bar,

Later in the year, New Age Lighting were awarded the supply and installation of the full refurbishment project for Blocks 3 to 6. This was during the midst of the Covid- 19 pandemic however our commercial team handled the situation well with timely supply of materials and feature lightngs, most importantly our team onsite cooperated with the main builder and worked hand in hand for successful and timely completion of the project.

# Resort projects

## Sofitel Resort & Spa

New Age Lighting was also engaged to supply and install electrical circuit and light fittings on other areas of the Sofitel Refurbishment Project.

- Waitui Bar and Grill
- Suka and Solis Restaurant
- Library Lounge
- Landscape Lighting



# Resort projects

## Sofitel Resort & Spa

New Age Lighting was also engaged to supply and install electrical circuit and light fittings on other areas of the Sofitel Refurbishment Project.

- Waitui Bar and Grill
- Suka and Solis Restaurant
- Library Lounge
- Kids Club
- Retail Shops
- Landscape Lighting



# Resort projects



## Laucala Island Resort

- PAT testing of all 21 guest villas.
- Supply and installation of LED neon strip light fittings across the entire exclusive 21 villas.
- Dynalight programming and correction of old dynalight systems.
- Supply and installation of landscape lighting across all the guest villas.
- Restoration of old feature lights.
- Supply install, upgrade and future proof all Electrical sub-cabling, sub-boards and lighting infrastructure across staff accommodation blocks on Onodere.

# Other Resort projects



- Switch board upgrade works.
- Supply and installation of new distribution board with new protective device
- Balanced the circuit and fix over heating circuit.
- Thermal Correction of Electrical Gears at the Property, completed with Thermos canning and report analysis was another successful job that New Age Electrical did at the Property.
- Repaired 600KVA Generator that came to a standby but our qualified team diagnosed, rectified and solved that as well.
- Estimated Value of Works 150k FJD



- Changed 60pole 3phase switch board with phase balancing
- Did underground cabling for laundry.
- Supplied and installed fan coil units in guest rooms.
- Has service contract with Novotel and is called to attend all electrical breakdowns.
- Repair all their kitchen and housekeeping electrical equipment's.
- Also installed security lights for golf course
- Upgraded switchboards in Block 600.
- We also repaired their generator changer over system (supplied and installed 600A change over contactor ABB brand) and have generator service contract.
- Estimated value of works : 300K FJD



- Switch board upgrade works.
- Supply and installation of new distribution board with new protective device
- Balanced the circuit and fix over heating circuit.
- Thermal Correction of Electrical Gears at the Property, completed with Thermos canning and report analysis was another successful job that New Age Electrical did at the Property.
- Repaired 600KVA Generator that came to a standby but our qualified team diagnosed, rectified and solved that as well.
- Estimated Value of Works 150k FJD

# Commercial Projects

## EPR Lautoka



- Supply and Installation complete Electrical System including Genset and Solar PV Panels
- Three Incomer source system Design and commissioning on Priority basis and Sync.
- Estimated Value of Works 0.2M FJD.

# Other Commercial Projects

## King Prawn Ltd

- Design, Supply and Installation of complete Electrical System with standby generators.
- Estimated Value of Works 300K FJD.

## Thirstly Liquor Nadi and Lautoka

- Supply and Installation of entire Electrical Services, backup generator and light fittings

## Food Stuff- Nadi

- Design, Supply and Installation of complete Electrical System with standby generators.
- Estimated Value of Works 150K FJD.

## Marriott Fiji Resort

- Design, Supply and Installation of complete Landscape Lighting System.
- Estimated Value of Works 300K FJD.

# Residential projects



## Trilogy Villas

- Design, Supply and Installation of complete Electrical System for all 3 Villas with standby generators.
- Estimated Value of Works 1.5M FJD.



# Residential projects

## Lot 11- Sovereign Keys- Denarau

- Supply and Installation of entire Electrical Services, backup generator and light fittings

## Mailagi Place, Transville

- Design, Supply and Installation of complete Electrical System with standby generators.

## Breeze Apartments

- Supply and Installation of entire Electrical Services, backup generator and light fittings

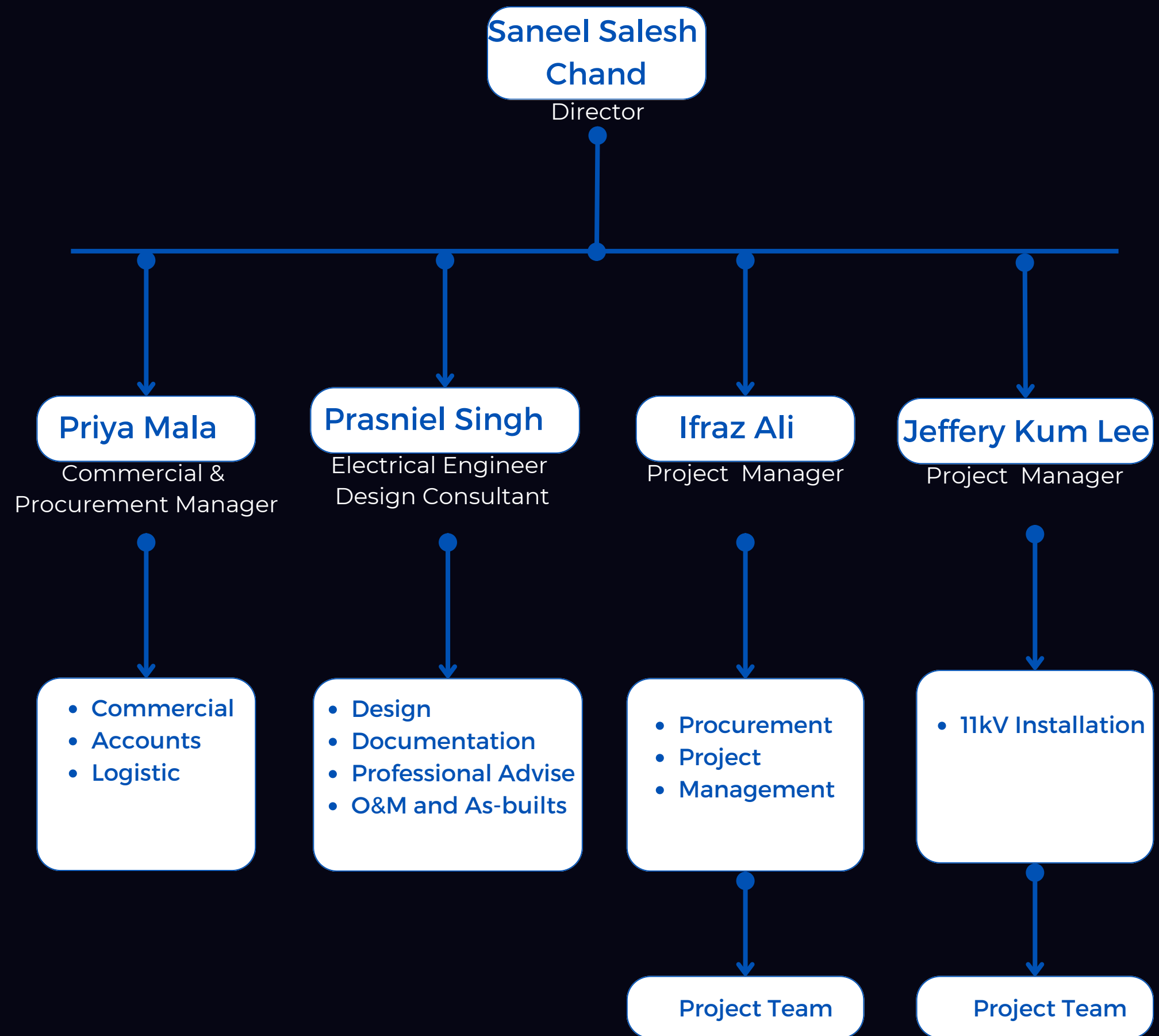
## Grant Residence Lot 11- Marina Point

- Supply and Installation of entire Electrical Services, backup generator and light fittings

# Other projects

1. Wyndham Rooms Refurb - Total Worth: 0.9M
2. Novotel DB Upgrad works - Total Worth: 0.5M
3. Fiji Gateway DB Upgrade Works - Total Worth: 0.3M
4. CLI Onodere DB Upgrade Project - Total Worth: 0.2M
5. Mainland (Nadi Backroad) Street Lighting - Total Worth: 0.2M
6. Tanoa Rooms Refurb - Total Worth: 0.2M
7. Shetaton Villa Refurb - Total Worth: 0.1M
8. Rendezvous Works - with PBS
9. Namuka Bay - With PBS

# The Firm



# Principal



SANEEL  
SALESH CHAND

Director

Saneel has over 12 years of Electrical engineering, design, procurement, supply and installation of all types of electrical systems. Having worked at Energy Fiji Ltd in the early stages of his career, Saneel has gained the fundamentals of electrical engineering, compliance standards and the requirements under the code of Energy Fiji Limited.

Saneel is a dedicated professional with commitment to deadlines, and works on the ground with the team onsite for successful delivery of each project.

The extensive knowledge which Saneel holds in High Voltage Cabling to the grift he has on quality and perfection with procurement and installation of feature lighting syatems is the key and the root of success for New Age Lighting Ltd.

# The Firm



**PRIYA MALA**

Accounts and  
Commercial  
Manager

## ACADEMIC HISTORY

Bachelor of Arts- USP

Majoring in Economics, Management & Public  
Administration

## KEY SKILLS

- Resolving contractual and commercial problems
- Discovering areas that are not in-keeping with regulation practices
- Offering direction and instruction
- Business Risk assessment
- Reviewing and developing operational process flows
- Ensuring that all stakeholders understand and adhere to contractual obligations
- Ensuring that the financial aspects and impact of a contract are clear to all parties
- Overseeing financial KPIs

# The Firm



**PRASNIEL SINGH**

**Electrical Engineering  
Design Consultant**

## ACADEMIC HISTORY

Bachelor of Engineering Technology- USP

## PROFFESIONAL AFFILIATIONS

Active Member of Fiji Institute of Engineers

Active Member of Fiji Institute of Quantity Surveyors

## KEY SKILLS

- Design Documentation of Full electrical LV and ELV services including specification, calculations and cost estimates
- Electrical Distribution, Single line diagrams
- Power and lighting detailed layouts design & documentation
- Budget Estimates
- testing, evaluating, modifying and re-testing products

# The Firm



**IFRAAZ ALI**

Project Manager

## ACADEMIC HISTORY

Trade Diploma in Electrical Engineering- FNU  
Wiremans License

## KEY SKILLS

- Leadership
- Plan Electrical projects from conception to implementation
- Map out timelines
- Assess project risks and opportunities
- Communicate with all stakeholders
- Troubleshoot problems and challenges
- All Standard technical electrician skills (and safety knowledge)

# The Firm

JEFFERY KUM  
LEE

11kV Senior  
Technician

## ACADEMIC HISTORY

Advanced Diploma in Electrical & Electronic Engineering- FNU

Licensed Electrician

Graduate (EFL Apprenticeship Scheme)

## KEY ATTRIBUTES

- Former High Voltage Senior Technician with EFL (1994 – 2009)
- Provided specialized services to EFL for
- Electrical Construction and project management of major power station projects including 3 MW Vaturu Dam
- Hydro Power Station, 40MW Diesel
- Generators for PERNIX, Fiji (2013 – 2015)
- Total of 16 years of service with EFL
- High Voltage Technician for TENIX NZ
- Installation of 5 x 33kv/11kv High Voltage
- Substations for EFL [2009 to 2013]



Our Philosophy



Excellence in Electrical  
Management Services  
&  
Meet the Expectation  
of Our Valued Clients

**S O F I T E L**  
LUXURY HOTELS

**FIJI RESORT & SPA**

## Reliance Singh

Chief Engineer- Sofitel Resorts & Spa

New Age Lighting and Refrigeration have always been an efficient contractor with excellent workmanship and delivery of projects and tasks has always been in a timely manner. They are helpful, understanding and amenable to our needs, they have gone out of their way on a number of occasions to source materials and resolve problems that we have requested. New Age Lighting and Refrigeration is a very reliable, helpful and friendly company and no job is too large or small for them "

CLIENT  
TESTIMONIALS



**Stewart Lovelock**  
Director-Construction Managers Group

New Age Lighting & Refrigeration was engaged on aforementioned projects to carry out electrical scope of works to 192 rooms which they completed and delivered within the specific timeframe. The team from New Age Lightig & Refrigeration were fond to be professional ,reliable and delivered well withing our expectation.

CLIENT  
TESTIMONIALS

# PROFESSIONAL REFREES

Here's a selection of the trade references we've had the privilege of working with:

- Mr. Philip Temo  
Temo Consulting  
Level 3, Tuvalu Embassy Building  
16 Gorrie Street, Suva  
Ph: +679 9926803  
E: [ptemo@temoconsulting.com](mailto:ptemo@temoconsulting.com)



- Mr. Stewart Lovelock  
Construction Managers Global (CMG), Denarau  
Ph: +6421283 1232 (NZ), +679 8906175 (Fiji)  
E: [stewart@cmgnz.com](mailto:stewart@cmgnz.com)



- Mr. Reliance Singh  
Chief Engineer  
Sofitel Fiji Resort & Spa, Denarau  
Ph: +679 7777259  
E: [reliance.singh@sofitelfiji.com.fj](mailto:reliance.singh@sofitelfiji.com.fj)



- Mr. Jack Work  
General Manager  
Novotel Hotel  
Ph: +679 7074425



- Mr. Aman Chand  
Financial Controller  
Sofitel Fiji Resort & Spa  
Denarau  
Nadi  
Ph: +679 7777252



- Mr. Paul Raju  
Back of House Director  
Sheraton and Westin Marriott Complex Denarau  
Ph: +679 9404746  
E: [paul.raju@marriott.com](mailto:paul.raju@marriott.com)



- Mr. Jay Singh  
Director  
Wailoaloa Hotel Pte Limited  
Nadi Bay Road Nadi  
Ph: +679 8652911  
E: [jsingh@paradigmhotelsgroup.com](mailto:jsingh@paradigmhotelsgroup.com)



- Irwin Alsop Pacific Pte Ltd  
19 Domain Road, Suva.  
(Contact Person: Roneel/Alifereti)  
Ph: +679 3302619  
E: [roneel@iap.com.fj](mailto:roneel@iap.com.fj)



- Terry Allen Construction Ltd  
Lot 6, Waikemu Sub Division Nadi  
Ph: +679 7760 697



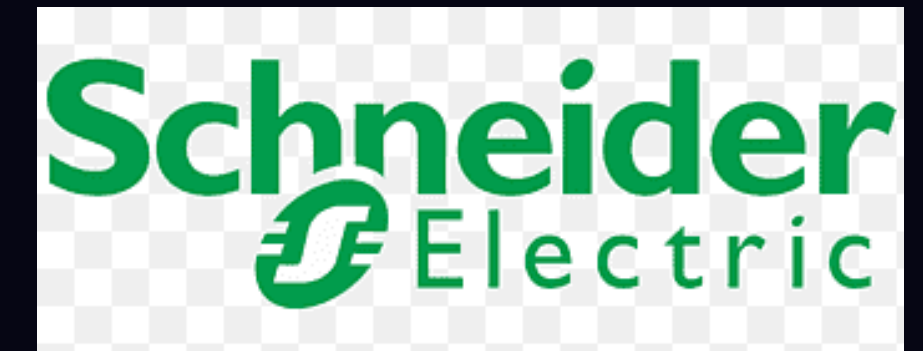
- Mr. Sanjay Chand  
Pacific Building Solution  
Project Manager Western Branch  
Ph: +679 9922002  
E: [sanjay@pacificbuildingsolutions.com](mailto:sanjay@pacificbuildingsolutions.com)

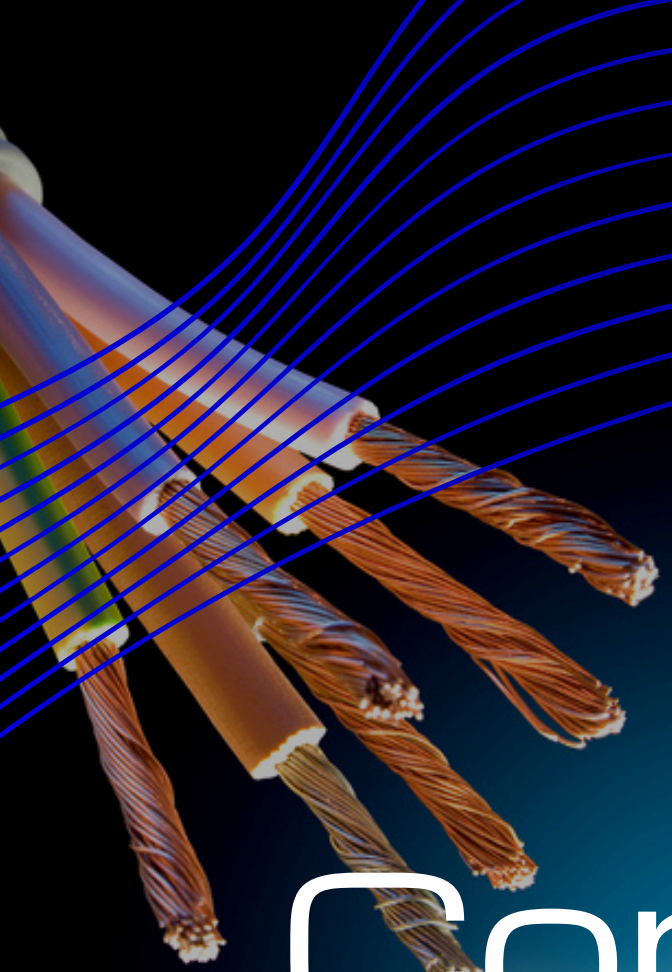


- Roneel Dutt  
CLUB WYNDHAM DENARAU ISLAND  
Denarau Island, Nadi  
P D 55, Port Denarau  
Ph: 675 0442  
M: 9926523  
E: [Roneel.Dutt@wyn.com](mailto:Roneel.Dutt@wyn.com)



# BRANDS ASSOCIATION





**WEBSITE**

[www.newagelighting.com.fj](http://www.newagelighting.com.fj)

**CONTACT NUMBER**

+ (679) 772 2175

**EMAIL**

[saneel@newagelighting.com.fj](mailto:saneel@newagelighting.com.fj)

# Contact Us

